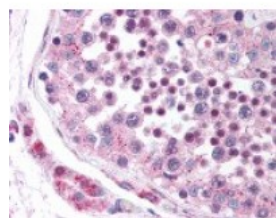




DCBLD2 Antibody

CATALOG NUMBER: 48-871



Immunohistochemistry staining of
DCBLD2 in testis tissue using DCBLD2
Antibody.

Specifications

SPECIES REACTIVITY:	Hamster, Human, Mouse, Rat
TESTED APPLICATIONS:	ELISA, IHC, WB
APPLICATIONS:	DCBLD2 antibody can be used in ELISA, and immunohistochemistry starting at 40 ug/mL.
USER NOTE:	Optimal dilutions for each application to be determined by the researcher.
IMMUNOGEN:	DCBLD2 antibody was raised against amino acids 399 - 416 of DCBLD2 (Human).
HOST SPECIES:	Rabbit

Properties

PURIFICATION:	Immunoaffinity Chromatography
PHYSICAL STATE:	Liquid
BUFFER:	PBS, 0.02% sodium azide.
STORAGE CONDITIONS:	DCBLD2 antibody can be stored short term 4 °C. For long term storage aliquot and store at -20 °C. As with all antibodies avoid freeze/thaw cycles.
CLONALITY:	Polyclonal
ISOTYPE:	IgG
CONJUGATE:	Unconjugated

Additional Info

ALTERNATE NAMES:	DCBLD2, CLCP1, ESDN
ACCESSION NO.:	Q96PD2
PROTEIN GI NO.:	57013820
OFFICIAL SYMBOL:	DCBLD2
GENE ID:	131566

Background

