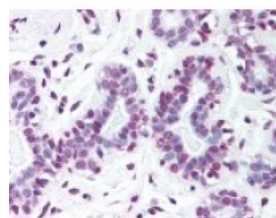




## SP1 Antibody

CATALOG NUMBER: 48-798



Immunohistochemistry staining of SP1 in breast tissue using SP1 Antibody.

### Specifications

#### SPECIES REACTIVITY:

#### TESTED APPLICATIONS:

**APPLICATIONS:** SP1 antibody can be used in Western Blot, immunohistochemistry starting at 10 ug/mL, immunoprecipitation, and flow cytometry.

**USER NOTE:** Optimal dilutions for each application to be determined by the researcher.

**IMMUNOGEN:** SP1 antibody was raised against a peptide mapping to internal domain of SP1 (Human).

**HOST SPECIES:** Rabbit

### Properties

**PURIFICATION:** Immunoaffinity Chromatography

**PHYSICAL STATE:** Liquid

**BUFFER:** Phosphate-buffered solution, pH 7.2, 0.09% sodium azide, 0.2% gelatin.

**CONCENTRATION:** 0.2 mg/ml

**STORAGE CONDITIONS:** Store SP1 antibody at 4 °C, **Avoid Freezing**

**CLONALITY:** Polyclonal

**ISOTYPE:** IgG

**CONJUGATE:** Unconjugated

### Additional Info

**ALTERNATE NAMES:** SP1, Sp1 transcription factor, Transcription factor Sp1, Specificity protein 1, TSFP1

**ACCESSION NO.:** P08047

**PROTEIN GI NO.:** 13638437

**OFFICIAL SYMBOL:** SP1

**GENE ID:** 6667

### Background

