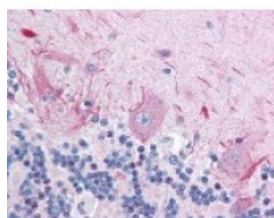




## Ribosomal Protein S6 Kinase Antibody

CATALOG NUMBER: 48-796



Immunohistochemistry staining of Ribosomal Protein S6 Kinase in cerebellum tissue using Ribosomal Protein S6 Kinase Antibody.

### Specifications

<b>SPECIES REACTIVITY:</b>	Human
<b>TESTED APPLICATIONS:</b>	IF, IHC
<b>APPLICATIONS:</b>	Ribosomal Protein S6 Kinase antibody can be used in ELISA, Western Blot starting at 1:2000, and immunohistochemistry starting at 1:50.
<b>USER NOTE:</b>	Optimal dilutions for each application to be determined by the researcher.
<b>SPECIFICITY:</b>	pThr368/Ser372
<b>IMMUNOGEN:</b>	Ribosomal Protein S6 Kinase antibody was raised against recombinant (partial), N-Terminal region of Ribosomal Protein S6 Kinase (Human).
<b>HOST SPECIES:</b>	Rabbit

### Properties

<b>PURIFICATION:</b>	Immunoaffinity Chromatography
<b>PHYSICAL STATE:</b>	Liquid
<b>BUFFER:</b>	Phosphate-buffered solution, pH 7.2, 0.09% sodium azide, 50% glycerol.
<b>STORAGE CONDITIONS:</b>	Store Ribosomal Protein S6 Kinase antibody at 4 °C or -20 °C. As with all antibodies avoid freeze/thaw cycles.
<b>CLONALITY:</b>	Polyclonal
<b>ISOTYPE:</b>	IgG
<b>CONJUGATE:</b>	Unconjugated

### Additional Info

<b>ALTERNATE NAMES:</b>	RPS6KA1, MAPKAPK-1a, p90RSK, p90-RSK 1, Pp90RSK1, Ribosomal S6 kinase 1, RSK-1, S6K-alpha 1, MAPKAP kinase 1a, MAPKAPK1A, p90 s6 kinase, p90S6K, RSK, RSK1, HU-1, p90RSK1, S6K-alpha-1
<b>ACCESSION NO.:</b>	Q15418
<b>PROTEIN GI NO.:</b>	20178306
<b>OFFICIAL SYMBOL:</b>	RPS6KA1

GENE ID: 6195

---

### Background

**BACKGROUND:** RSK1 is an RSK serine/threonine kinase. This kinase contains 2 nonidentical kinase catalytic domains and phosphorylates various substrates, including members of the mitogen-activated kinase (MAPK) signalling pathway. The activity of this protein has been implicated in controlling cell growth and differentiation. Alternate transcriptional splice variants, encoding different isoforms, have been characterized.

---

FOR RESEARCH USE ONLY

December 13, 2016