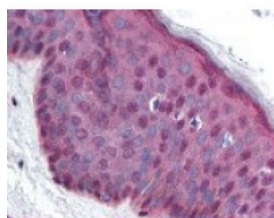




MDM2 Antibody [SMP14]

CATALOG NUMBER: 48-781



Immunohistochemistry staining of MDM2
in skin tissue using MDM2 monoclonal
Antibody.

Specifications

SPECIES REACTIVITY:	Dog, Gibbon, Human, Monkey, Orangutan, Rat
TESTED APPLICATIONS:	IHC, IP, WB
APPLICATIONS:	MDM2 antibody can be used in immunohistochemistry starting at 1:50, and flow cytometry starting at 1 ug/1E6 cells.
USER NOTE:	Optimal dilutions for each application to be determined by the researcher.
SPECIFICITY:	Recognizes the 90kD MDM2 protein, which forms a complex with p53 leading to p53 inhibition. MDM2 also acts to stimulate cell proliferation via its induction of transcription factors such as E2F1 and DPI. MDM2 is over expressed in a range of human mal ...
IMMUNOGEN:	MDM2 monoclonal antibody was raised against amino acids 154 - 167 of MDM2 (Human).
HOST SPECIES:	Mouse

Properties

PURIFICATION:	IgG Fractionation
PHYSICAL STATE:	Liquid
BUFFER:	PBS, pH 7.4, 0.09% sodium azide.
STORAGE CONDITIONS:	Store MDM2 antibody at 4 °C or -20 °C. As with all antibodies avoid freeze/thaw cycles. Store undiluted.
CLONALITY:	Monoclonal
ISOTYPE:	IgG1
CONJUGATE:	Unconjugated

Additional Info

ALTERNATE NAMES:	MDM2, ACTFS, Double minute 2 protein, Hdm2, MDM2 variant FB30, HDMX, Oncoprotein Mdm2, p53-binding protein Mdm2, MDM2 variant FB28
ACCESSION NO.:	Q00987
PROTEIN GI NO.:	266516
OFFICIAL SYMBOL:	MDM2

GENE ID: 4193

Background

BACKGROUND: *This product requires antigen retrieval using heat treatment prior to staining of paraffin sections. EDTA pH8.0 is recommended for this purpose. IHC Control: Breast Carcinoma.

FOR RESEARCH USE ONLY

December 13, 2016