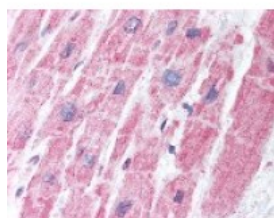


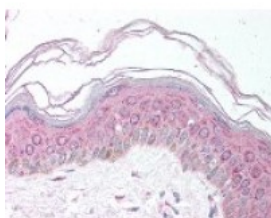


MDH1 Antibody

CATALOG NUMBER: 48-671



Immunohistochemistry staining of MDH1 in heart tissue using MDH1 Antibody.



Immunohistochemistry staining of MDH1 in skin using MDH1 Antibody.

Specifications

SPECIES REACTIVITY:	Human, Pig
TESTED APPLICATIONS:	ELISA, IHC, IP, WB
APPLICATIONS:	MDH1 antibody can be used in immunohistochemistry starting at 20 ug/mL.
USER NOTE:	Optimal dilutions for each application to be determined by the researcher.
IMMUNOGEN:	MDH1 antibody was raised against Malate Dehydrogenase from pig heart (Porcine).
HOST SPECIES:	Sheep

Properties

PURIFICATION:	IgG Fractionation
PHYSICAL STATE:	Liquid
BUFFER:	0.02 M potassium phosphate, 0.15 M sodium chloride, pH 7.2, 0.01% sodium azide.
STORAGE CONDITIONS:	MDH1 antibody can be stored short term 4 °C. For long term storage aliquot and store at -20 °C. As with all antibodies avoid freeze/thaw cycles.
CLONALITY:	Polyclonal
CONJUGATE:	Unconjugated

Additional Info

ALTERNATE NAMES:	MDH1, Cytosolic malate dehydrogenase, Diiodophenylpyruvate reductase, MOR2, MDH-s, MDHA, MGC:1375, Soluble malate dehydrogenase
ACCESSION NO.:	P40925
PROTEIN GI NO.:	1708967
OFFICIAL SYMBOL:	MDH1
GENE ID:	4190

Background

FOR RESEARCH USE ONLY

