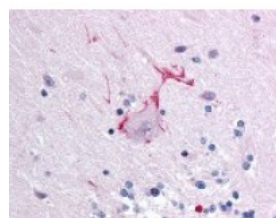




Otoferlin Antibody

CATALOG NUMBER: 48-661



Immunohistochemistry staining of Otoferlin
in cerebellum tissue using Otoferlin
Antibody.

Specifications

SPECIES REACTIVITY:	Human
TESTED APPLICATIONS:	ELISA, IHC
APPLICATIONS:	Otoferlin antibody can be used in ELISA starting at 1:2000 - 1:10000, Western Blot starting at 1:500 - 1:1000, immunohistochemistry starting at 1:500, and immunoprecipitation
USER NOTE:	Optimal dilutions for each application to be determined by the researcher.
IMMUNOGEN:	Synthetic peptide from human OTOF.
HOST SPECIES:	Rabbit

Properties

PURIFICATION:	Protein G Column
PHYSICAL STATE:	Liquid
BUFFER:	PBS, 0.09% sodium azide.
STORAGE CONDITIONS:	Otoferlin antibody should be stored long term (months) at -20 °C and short term (weeks) at 4 °C. As with all antibodies avoid freeze/thaw cycles.
CLONALITY:	Polyclonal
CONJUGATE:	Unconjugated

Additional Info

ALTERNATE NAMES:	OTOF, AUNB1, DFNB6, DFNB9, Otoferlin, Fer-1-like protein 2, FER1L2, NSRD9
ACCESSION NO.:	Q9HC10
PROTEIN GI NO.:	116242695
OFFICIAL SYMBOL:	OTOF
GENE ID:	9381

Background

FOR RESEARCH USE ONLY

