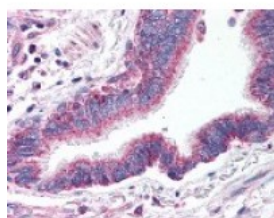




LRP8 Antibody

CATALOG NUMBER: 48-660



Immunohistochemistry staining of LRP8 in lung, respiratory epithelium tissue using LRP8 Antibody.

Specifications

SPECIES REACTIVITY:	Human
TESTED APPLICATIONS:	ELISA, IHC
APPLICATIONS:	LRP8 antibody can be used in ELISA starting at 1:2000 - 1:10000, Western Blot starting at 1:500 - 1:1000, immunohistochemistry starting at 1:500, and immunoprecipitation
USER NOTE:	Optimal dilutions for each application to be determined by the researcher.
IMMUNOGEN:	Synthetic peptide from human LRP8 / APOER2.
HOST SPECIES:	Rabbit

Properties

PURIFICATION:	Protein G Column
PHYSICAL STATE:	Liquid
BUFFER:	PBS, 0.1% sodium azide.
STORAGE CONDITIONS:	LRP8 antibody should be stored long term (months) at -20 °C and short term (weeks) at 4 °C. As with all antibodies avoid freeze/thaw cycles.
CLONALITY:	Polyclonal
CONJUGATE:	Unconjugated

Additional Info

ALTERNATE NAMES:	LRP8, Apolipoprotein E receptor 2, APOER2, MCI1, HSZ75190, ApoE receptor 2, LRP-8
ACCESSION NO.:	Q14114
PROTEIN GI NO.:	259016389
OFFICIAL SYMBOL:	LRP8
GENE ID:	7804

Background

FOR RESEARCH USE ONLY

