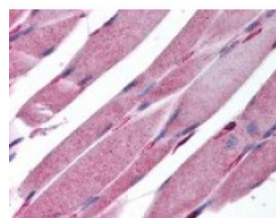




KALRN Antibody

CATALOG NUMBER: 48-649



Immunohistochemistry staining of KALRN
in skeletal muscle tissue using KALRN
Antibody.

Specifications

SPECIES REACTIVITY:	Human
TESTED APPLICATIONS:	ELISA, IHC
APPLICATIONS:	KALRN antibody can be used in immunohistochemistry starting at 20 ug/mL.
USER NOTE:	Optimal dilutions for each application to be determined by the researcher.
IMMUNOGEN:	KALRN antibody was raised against amino acids 1591 - 1605 of KALRN (Human).
HOST SPECIES:	Rabbit

Properties

PHYSICAL STATE:	Liquid
BUFFER:	PBS, pH 7.4, 0.09% sodium azide.
STORAGE CONDITIONS:	KALRN antibody should be stored long term (months) at -20 °C and short term (weeks) at 4 °C. As with all antibodies avoid freeze/thaw cycles.
CLONALITY:	Polyclonal
CONJUGATE:	Unconjugated

Additional Info

ALTERNATE NAMES:	KALRN, ARHGEF24, DUO, CHDS5, DUET, HAPIP, Kalirin, RhoGEF kinase, Kalirin, Protein Duo, TRAD
ACCESSION NO.:	O60229
PROTEIN GI NO.:	160380714
OFFICIAL SYMBOL:	KALRN
GENE ID:	8997

Background

BACKGROUND:	Duet is a TRIO/TRAD serine/threonine kinase with Dbl-Homology (DH) and Pleckstrin-Homology (PH) domains. Duet protein was localized to actin-associated cytoskeletal elements, suggesting a role in the cytoskeleton-dependent cell function. Huntington's disease is an inherited neurodegenerative disease which occurs when the widely expressed protein huntingtin contains an expanded glutamine repeat. HAPIP protein binds to HAP1, which
--------------------	--

is a huntington binding protein that may function in vesicle trafficking.

FOR RESEARCH USE ONLY

December 13, 2016