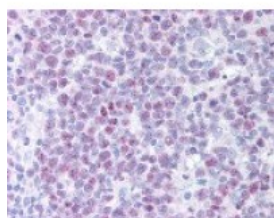




POLD1 Antibody [607]

CATALOG NUMBER: 48-648



Immunohistochemistry staining of POLD1
in tonsil tissue using POLD1 monoclonal
Antibody.

Specifications

SPECIES REACTIVITY:	Human
TESTED APPLICATIONS:	IHC, WB
APPLICATIONS:	POLD1 antibody can be used in ELISA, Western Blot starting at 1:500 - 1:2000, immunohistochemistry starting at 1:200, and flow cytometry starting at 1:200 - 1:400.
USER NOTE:	Optimal dilutions for each application to be determined by the researcher.
IMMUNOGEN:	POLD1 monoclonal antibody was raised against amino acids 1 - 140 of POLD1 (Human).
HOST SPECIES:	Mouse

Properties

PURIFICATION:	Protein G Column
PHYSICAL STATE:	Liquid
BUFFER:	PBS.
STORAGE CONDITIONS:	Store POLD1 antibody at 4 °C or -20 °C. As with all antibodies avoid freeze/thaw cycles.
CLONALITY:	Monoclonal
ISOTYPE:	IgG
CONJUGATE:	Unconjugated

Additional Info

ALTERNATE NAMES:	POLD1, CDC2, CDC2 homolog, POLD
ACCESSION NO.:	P28340
PROTEIN GI NO.:	50403732
OFFICIAL SYMBOL:	POLD1
GENE ID:	5424

Background

BACKGROUND: DNA polymerase d (delta) functions in DNA replication and DNA repair. It also possesses 3' to 5' exonuclease

activity. In leading strand synthesis it requires the processivity factor, PCNA. It is also possibly involved in the completion of DNA synthesis during Okazaki fragment elongation following the initiation of synthesis by the DNA polymerase α /primase complex.

FOR RESEARCH USE ONLY

December 13, 2016