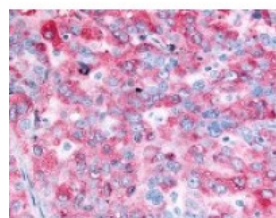




EGF Receptor Antibody

CATALOG NUMBER: 48-394



Immunohistochemistry staining of EGF receptor in ovarian carcinoma tissue using EGF receptor Antibody.

Specifications

SPECIES REACTIVITY:	Gorilla, Human
TESTED APPLICATIONS:	IHC
APPLICATIONS:	EGF Receptor antibody can be used in immunohistochemistry starting at 1:50.
USER NOTE:	Optimal dilutions for each application to be determined by the researcher.
SPECIFICITY:	BLAST analysis of the peptide immunogen showed no homology with other human proteins, except LSR (44%).
IMMUNOGEN:	EGF Receptor antibody was raised against a peptide located in the C-Terminal domain of EGF Receptor (Human).
HOST SPECIES:	Rabbit

Properties

PURIFICATION:	Immunoaffinity Chromatography
PHYSICAL STATE:	Liquid
BUFFER:	PBS, 0.1% sodium azide.
STORAGE CONDITIONS:	EGF Receptor antibody should be stored long term (months) at -80 °C and short term (days) at 4 °C. As with all antibodies avoid freeze/thaw cycles.
CLONALITY:	Polyclonal
CONJUGATE:	Unconjugated

Additional Info

ALTERNATE NAMES:	EGFR, EGFr receptor, ERBB, ERBB1, MENA, Panitumumab, PIG61, Proto-oncogene c-ErbB-1, V-erb-b homolog, EGF-R, HER1
ACCESSION NO.:	P00533
PROTEIN GI NO.:	2811086
OFFICIAL SYMBOL:	EGFR
GENE ID:	1956

Background

BACKGROUND: Epidermal growth factor receptor (EGFR) is a tyrosine protein kinase comprised of two different components of different molecular weights. Both components contain phosphotyrosine and phosphothreonine but only the higher molecular weight component contains phosphoserine. EGFR signaling involves small GTPases of the Rho family and EGFR trafficking involves small GTPases of the Rab family. EGFR expression is widespread in both normal and cancerous tissues.

FOR RESEARCH USE ONLY

December 13, 2016