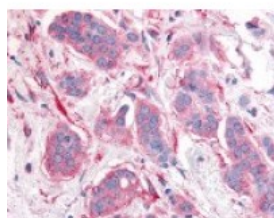




ERBB2 Antibody

CATALOG NUMBER: 48-393



Immunohistochemistry staining of ERBB2
in breast carcinoma, neoplastic cells using
ERBB2 Antibody.

Specifications

SPECIES REACTIVITY:	Bovine, Gibbon, Gorilla, Hamster, Horse, Human, Monkey, Mouse, Rat
TESTED APPLICATIONS:	IHC
APPLICATIONS:	ERBB2 antibody can be used in ELISA starting at 1:10000, Western Blot starting at 1:500 - 1:2000, immunohistochemistry starting at 1:200, and immunofluorescence starting at 1:200 - 1:1000.
USER NOTE:	Optimal dilutions for each application to be determined by the researcher.
SPECIFICITY:	BLAST analysis of the peptide immunogen showed no homology with other human proteins.
IMMUNOGEN:	ERBB2 antibody was raised against a peptide located in the cytoplasmic domain of ERBB2 (Human).
HOST SPECIES:	Rabbit

Properties

PURIFICATION:	Immunoaffinity Chromatography
PHYSICAL STATE:	Liquid
BUFFER:	PBS, 0.1% sodium azide.
STORAGE CONDITIONS:	ERBB2 antibody should be stored long term (months) at -80 °C and short term (days) at 4 °C. As with all antibodies avoid freeze/thaw cycles.
CLONALITY:	Polyclonal
CONJUGATE:	Unconjugated

Additional Info

ALTERNATE NAMES:	ERBB2, C-erb B2/neu protein, CD340, HER2, Herstatin, MLN 19, HER-2, Neu, NGL, Proto-oncogene c-ErbB-2, Proto-oncogene Neu, CD340 antigen, MLN19, p185erbB2, TKR1
ACCESSION NO.:	P04626
PROTEIN GI NO.:	119533
OFFICIAL SYMBOL:	ERBB2
GENE ID:	2064

Background

BACKGROUND: A tyrosine kinase receptor in the EGF-receptor family. ErbB2 does not bind ligand on its own, but acts as an amplifier in heterodimers with ErbB1, (EGFR), ErbB3, or ErbB4. Amplification of the ErbB2 gene and overexpression of ErbB2 protein is associated with breast cancer (~25% of cases), and anti-ErbB2 therapeutics (e.g. Herceptin, an anti-ErbB2 monoclonal antibody) are sometimes effective in treating these cases. Overexpression of ErbB2 has also been indicated as a factor in prostate cancer.

FOR RESEARCH USE ONLY

December 13, 2016