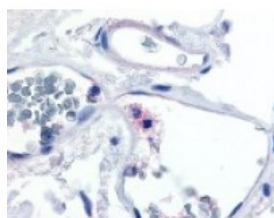




Integrin alpha X Antibody

CATALOG NUMBER: 48-386



Immunohistochemistry staining of Integrin alpha X in colon, neutrophils tissue using Integrin alpha X Antibody.

Specifications

SPECIES REACTIVITY:	Gorilla, Human
TESTED APPLICATIONS:	IHC
APPLICATIONS:	Integrin alpha X antibody can be used in ELISA, Western Blot starting at 1:500 - 1:1000, immunohistochemistry starting at 5 ug/mL, and immunoprecipitation
USER NOTE:	Optimal dilutions for each application to be determined by the researcher.
SPECIFICITY:	BLAST analysis of the peptide immunogen showed no homology with other human proteins, except TDO2 (57%).
IMMUNOGEN:	Integrin alpha X antibody was raised against a peptide located near the internal domain of Integrin alpha X (Human).
HOST SPECIES:	Rabbit

Properties

PURIFICATION:	Immunoaffinity Chromatography
PHYSICAL STATE:	Liquid
BUFFER:	PBS, 0.1% sodium azide.
STORAGE CONDITIONS:	Integrin alpha X antibody should be stored long term (months) at -80 °C and short term (days) at 4 °C. As with all antibodies avoid freeze/thaw cycles.
CLONALITY:	Polyclonal
CONJUGATE:	Unconjugated

Additional Info

ALTERNATE NAMES:	ITGAX, CD11c antigen, Integrin alpha-X, Leu M5, alpha subunit, p150 95 integrin alpha chain, SLEB6, CD11C, Leu M5
ACCESSION NO.:	P20702
PROTEIN GI NO.:	146345441
OFFICIAL SYMBOL:	ITGAX

GENE ID: 3687

Background

BACKGROUND: ITGAX encodes the integrin alpha X chain. Integrins are heterodimeric integral membrane proteins composed of an alpha chain and a beta chain. This I-domain containing alpha integrin combines with the beta 2 chain (ITGB2) to form a leukocyte-specific integrin referred to as inactivated-C3b (iC3b) receptor 4 (CR4). The alpha X beta 2 seems to broadly overlap the properties of the alpha M beta 2 integrin in adherence of neutrophils and monocytes to stimulated endothelium, and the phagocytosis of complement coated particles.

FOR RESEARCH USE ONLY

December 13, 2016