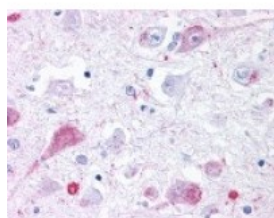




GRM2 Antibody

CATALOG NUMBER: 48-303



Immunohistochemistry staining of GRM2
in brain, thalamus tissue using GRM2
Antibody.

Specifications

SPECIES REACTIVITY:	Chimpanzee, Gibbon, Gorilla, Human, Monkey
TESTED APPLICATIONS:	IHC
APPLICATIONS:	GRM2 antibody can be used in ELISA, Western Blot, immunohistochemistry starting at 5 ug/mL, and immunoprecipitation
USER NOTE:	Optimal dilutions for each application to be determined by the researcher.
SPECIFICITY:	BLAST analysis of the peptide immunogen showed no homology with other human proteins, except GRM3 (53%).
IMMUNOGEN:	GRM2 antibody was raised against a peptide located in the N-Terminal extracellular domain of GRM2 (Human).
HOST SPECIES:	Rabbit

Properties

PURIFICATION:	Immunoaffinity Chromatography
PHYSICAL STATE:	Liquid
BUFFER:	PBS, 0.1% sodium azide.
STORAGE CONDITIONS:	GRM2 antibody should be stored long term (months) at -80 °C and short term (days) at 4 °C. As with all antibodies avoid freeze/thaw cycles.
CLONALITY:	Polyclonal
CONJUGATE:	Unconjugated

Additional Info

ALTERNATE NAMES:	GRM2, Glutamate receptor homolog, GPRC1B, MGlu2, Metabotropic, GLUR2, MGLUR2
ACCESSION NO.:	Q14416
PROTEIN GI NO.:	76803802
OFFICIAL SYMBOL:	GRM2
GENE ID:	2912

Background

BACKGROUND: The Metabotropic Glutamate Receptor GRM2 binds L-glutamate and has been linked to the inhibition of the cyclic AMP signaling cascade. GRM2 is involved in mediating the suppression of neurotransmission and in synaptogenesis and synaptic stabilization. Glutamatergic neurotransmission plays a role in most aspects of normal brain function and can be perturbed in many neuropathologic conditions.

FOR RESEARCH USE ONLY

December 13, 2016