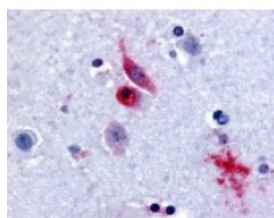




GPR61 Antibody

CATALOG NUMBER: 48-301



Immunohistochemistry staining of GPR61
in brain, caudate tissue using GPR61
Antibody.

Specifications

SPECIES REACTIVITY:	Human
TESTED APPLICATIONS:	ELISA, IHC
APPLICATIONS:	GPR61 antibody can be used in immunohistochemistry starting at 10 ug/mL.
USER NOTE:	Optimal dilutions for each application to be determined by the researcher.
SPECIFICITY:	BLAST analysis of the peptide immunogen showed no homology with other human proteins, except GPR124 (44%).
IMMUNOGEN:	GPR61 antibody was raised against a peptide located in the 2nd extracellular domain of GPR61 (Human).
HOST SPECIES:	Rabbit

Properties

PURIFICATION:	Immunoaffinity Chromatography
PHYSICAL STATE:	Liquid
BUFFER:	PBS, 0.1% sodium azide.
STORAGE CONDITIONS:	GPR61 antibody should be stored long term (months) at -80 °C and short term (days) at 4 °C. As with all antibodies avoid freeze/thaw cycles.
CLONALITY:	Polyclonal
CONJUGATE:	Unconjugated

Additional Info

ALTERNATE NAMES:	GPR61, BALGR, GPCR3, G protein-coupled receptor 61
ACCESSION NO.:	Q9BZJ8
PROTEIN GI NO.:	76789653
OFFICIAL SYMBOL:	GPR61
GENE ID:	83873

Background

BACKGROUND: GPR61 is an Orphan-A GPCR with an unknown ligand.

FOR RESEARCH USE ONLY

December 13, 2016