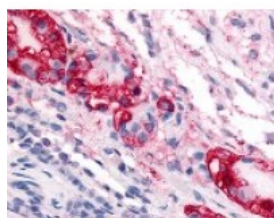




## CRHR1 Antibody

CATALOG NUMBER: 48-294



Immunohistochemistry staining of CRHR1  
in pars intermedia tissue using CRHR1  
Antibody.

### Specifications

<b>SPECIES REACTIVITY:</b>	Dog, Gibbon, Gorilla, Hamster, Horse, Human, Monkey, Mouse, Rat
<b>TESTED APPLICATIONS:</b>	IHC
<b>APPLICATIONS:</b>	CRHR1 antibody can be used in ELISA starting at 1:10000, Western Blot starting at 1:500 - 1:2000, and immunohistochemistry starting at 1:200 - 1:300.
<b>USER NOTE:</b>	Optimal dilutions for each application to be determined by the researcher.
<b>SPECIFICITY:</b>	BLAST analysis of the peptide immunogen showed no homology with other human proteins, except CRHR2 (73%).
<b>IMMUNOGEN:</b>	CRHR1 antibody was raised against a peptide located in the N-Terminal extracellular domain of CRHR1 (Human).
<b>HOST SPECIES:</b>	Rabbit

### Properties

<b>PURIFICATION:</b>	Immunoaffinity Chromatography
<b>PHYSICAL STATE:</b>	Liquid
<b>BUFFER:</b>	PBS, 0.1% sodium azide.
<b>STORAGE CONDITIONS:</b>	CRHR1 antibody should be stored long term (months) at -80 °C and short term (days) at 4 °C. As with all antibodies avoid freeze/thaw cycles.
<b>CLONALITY:</b>	Polyclonal
<b>CONJUGATE:</b>	Unconjugated

### Additional Info

<b>ALTERNATE NAMES:</b>	CRHR1, CRF-R-1, CRFR, CRHR1f, Crf receptor 1, CRH-R1, CRF-R, CRF1, CRFR-1, Crf receptor type 1, Crf receptor type 1, Crf type 1, CRF-R1, Crf1 receptor, CRFR1, CRH-R-1, CRH-R1h, CRHR, CRHR1L
<b>ACCESSION NO.:</b>	P34998
<b>PROTEIN GI NO.:</b>	461836
<b>OFFICIAL SYMBOL:</b>	CRHR1

GENE ID: 1394

---

### Background

**BACKGROUND:** Corticotropin-releasing factor receptor 1 (CRFR1/CRHR1), a Corticotropin-Releasing Factor Receptor, is involved in mediating the stress response and anxiety-related behaviors. Mutations of the receptor reduce anxiety-related behaviors and may be involved in the pathogenesis of Cushing disease. Multiple isoforms of CRFR1 are produced by alternative splicing.

---

FOR RESEARCH USE ONLY

December 13, 2016