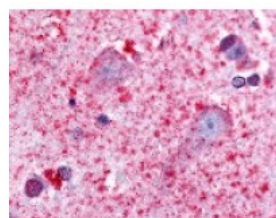




HTR7 Antibody

CATALOG NUMBER: 48-291



Immunohistochemistry staining of HTR7 in brain cortex tissue using HTR7 Antibody.

Specifications

SPECIES REACTIVITY:	Gibbon, Gorilla, Human
TESTED APPLICATIONS:	ELISA, IHC
APPLICATIONS:	HTR7 antibody can be used in immunohistochemistry starting at 6 ug/mL.
USER NOTE:	Optimal dilutions for each application to be determined by the researcher.
SPECIFICITY:	BLAST analysis of the peptide immunogen showed no homology with other human proteins.
IMMUNOGEN:	HTR7 antibody was raised against a peptide located in the 3rd cytoplasmic domain of HTR7 (Human).
HOST SPECIES:	Rabbit

Properties

PURIFICATION:	Immunoaffinity Chromatography
PHYSICAL STATE:	Liquid
BUFFER:	PBS, 0.1% sodium azide.
STORAGE CONDITIONS:	HTR7 antibody should be stored long term (months) at -80 °C and short term (days) at 4 °C. As with all antibodies avoid freeze/thaw cycles.
CLONALITY:	Polyclonal
CONJUGATE:	Unconjugated

Additional Info

ALTERNATE NAMES:	HTR7, 5-HT7, 5-HT7 receptor, 5-HT-7, 5-hydroxytryptamine 7 receptor, 5HT7, 5-HT-X, 5-hydroxytryptamine receptor 7, 5HT7 Receptor, HT7, Serotonin 5-HT7 receptor, Serotonin receptor 7
ACCESSION NO.:	P34969
PROTEIN GI NO.:	8488960
OFFICIAL SYMBOL:	HTR7
GENE ID:	3363

Background

BACKGROUND: 5-HT7 Receptor is a Serotonin Receptor with several functions, including regulation of the circadian rhythm and

mediation of smooth-muscle relaxation in the vasculature and GI tract. This receptor has been implicated in depression, autism, and other neuropsychiatric disorders. Three protein isoforms have been documented: isoform a: 445aa; isoform b: 432aa; isoform d: 479aa.

FOR RESEARCH USE ONLY

December 13, 2016