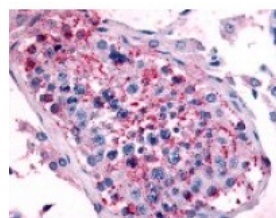




HTR1E Antibody

CATALOG NUMBER: 48-290



Immunohistochemistry staining of HTR1E
in testis tissue using HTR1E Antibody.

Specifications

SPECIES REACTIVITY:	Bat, Chimpanzee, Gorilla, Guinea Pig, Horse, Human, Monkey
TESTED APPLICATIONS:	ELISA, IHC
APPLICATIONS:	HTR1E antibody can be used in immunohistochemistry starting at 10 - 15 ug/mL.
USER NOTE:	Optimal dilutions for each application to be determined by the researcher.
SPECIFICITY:	BLAST analysis of the peptide immunogen showed no homology with other human proteins.
IMMUNOGEN:	HTR1E antibody was raised against a peptide located in the 3rd cytoplasmic domain of HTR1E (Human).
HOST SPECIES:	Rabbit

Properties

PURIFICATION:	Immunoaffinity Chromatography
PHYSICAL STATE:	Liquid
BUFFER:	PBS, 0.1% sodium azide.
STORAGE CONDITIONS:	HTR1E antibody should be stored long term (months) at -80 °C and short term (days) at 4 °C. As with all antibodies avoid freeze/thaw cycles.
CLONALITY:	Polyclonal
CONJUGATE:	Unconjugated

Additional Info

ALTERNATE NAMES:	HTR1E, 5-HT1E, 5-HT1e receptor, 5-HT-1E, 5HT1E Receptor, HT1e receptor, S31, Serotonin 5-HT-1e receptor, Serotonin 1e receptor, Serotonin receptor 1E
ACCESSION NO.:	P28566
PROTEIN GI NO.:	112822
OFFICIAL SYMBOL:	HTR1E
GENE ID:	3354

Background

BACKGROUND:	5HT1E, a Serotonin Receptor, is not well studied. It is classified as an 5-HT1-like receptor because of its ligand-
--------------------	---

binding and effector-coupling characteristics. The human 5-HT_{1E} receptor has been studied in an African green monkey kidney cell line, in which it modulated cAMP levels upon binding serotonin. Lack of structural variants in the human gene indicate a highly conserved protein.

FOR RESEARCH USE ONLY

December 13, 2016