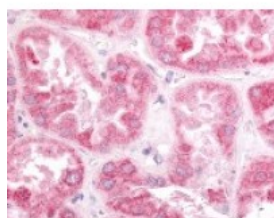




## ESRRG Antibody

CATALOG NUMBER: 48-284



Immunohistochemistry staining of ESRRG  
in kidney tissue using ESRRG Antibody.

### Specifications

<b>SPECIES REACTIVITY:</b>	Bat, Bovine, Dog, Gibbon, Gorilla, Hamster, Horse, Human, Monkey, Mouse, Orangutan, Rat
<b>TESTED APPLICATIONS:</b>	ELISA, IHC
<b>APPLICATIONS:</b>	ESRRG antibody can be used in immunohistochemistry starting at 10 - 15 ug/mL.
<b>USER NOTE:</b>	Optimal dilutions for each application to be determined by the researcher.
<b>SPECIFICITY:</b>	BLAST analysis of the peptide immunogen showed no homology with other human proteins.
<b>IMMUNOGEN:</b>	ESRRG antibody was raised against a peptide located in the N-Terminal domain of ESRRG (Human).
<b>HOST SPECIES:</b>	Rabbit

### Properties

<b>PURIFICATION:</b>	Immunoaffinity Chromatography
<b>PHYSICAL STATE:</b>	Liquid
<b>BUFFER:</b>	PBS, 0.1% sodium azide.
<b>STORAGE CONDITIONS:</b>	ESRRG antibody should be stored long term (months) at -80 °C and short term (days) at 4 °C. As with all antibodies avoid freeze/thaw cycles.
<b>CLONALITY:</b>	Polyclonal
<b>CONJUGATE:</b>	Unconjugated

### Additional Info

<b>ALTERNATE NAMES:</b>	ESRRG, ERR Gamma, ERR gamma-2, ERR3, Err-gamma, NR3B3, ERRG2, ERRgamma, KIAA0832
<b>ACCESSION NO.:</b>	P62508
<b>PROTEIN GI NO.:</b>	50402102
<b>OFFICIAL SYMBOL:</b>	ESRRG
<b>GENE ID:</b>	2104

### Background

FOR RESEARCH USE ONLY

