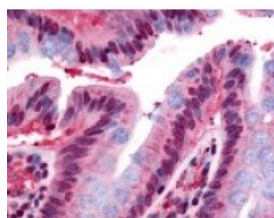




GPR160 Antibody

CATALOG NUMBER: 48-281



Immunohistochemistry staining of
GPR160 in colon, epithelium tissue using
GPR160 Antibody.

Specifications

| | |
|-----------------------------|---|
| SPECIES REACTIVITY: | Gibbon, Gorilla, Human |
| TESTED APPLICATIONS: | ELISA, IHC |
| APPLICATIONS: | GPR160 antibody can be used in immunohistochemistry starting at 6 ug/mL. |
| USER NOTE: | Optimal dilutions for each application to be determined by the researcher. |
| SPECIFICITY: | BLAST analysis of the peptide immunogen showed no homology with other human proteins. |
| IMMUNOGEN: | GPR160 antibody was raised against a peptide located in the 3rd cytoplasmic domain of GPR160 (Human). |
| HOST SPECIES: | Rabbit |

Properties

| | |
|----------------------------|---|
| PURIFICATION: | Immunoaffinity Chromatography |
| PHYSICAL STATE: | Liquid |
| BUFFER: | PBS, 0.1% sodium azide. |
| STORAGE CONDITIONS: | GPR160 antibody should be stored long term (months) at -80 °C and short term (days) at 4 °C. As with all antibodies avoid freeze/thaw cycles. |
| CLONALITY: | Polyclonal |
| CONJUGATE: | Unconjugated |

Additional Info

| | |
|-------------------------|--|
| ALTERNATE NAMES: | GPR160, HGPCR1, G protein-coupled receptor 160, GPCR1, GPCR150 |
| ACCESSION NO.: | Q9UJ42 |
| PROTEIN GI NO.: | 48428180 |
| OFFICIAL SYMBOL: | GPR160 |
| GENE ID: | 26996 |

Background

| | |
|--------------------|--|
| BACKGROUND: | GPR160/GPCR150 is an Orphan-A GPCR with an unknown ligand. |
|--------------------|--|

