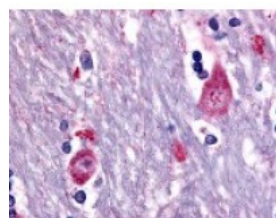




## CHRM3 Antibody

CATALOG NUMBER: 48-280



Immunohistochemistry staining of CHRM3  
in brain, caudate tissue using CHRM3  
Antibody.

### Specifications

<b>SPECIES REACTIVITY:</b>	Bat, Bovine, Chimpanzee, Dog, Gibbon, Gorilla, Guinea Pig, Hamster, Horse, Human, Monkey, Mouse, Orangutan, Pig, Rabbit, Rat, Sheep
<b>TESTED APPLICATIONS:</b>	ELISA, IHC
<b>APPLICATIONS:</b>	CHRM3 antibody can be used in immunohistochemistry starting at 10 ug/mL.
<b>USER NOTE:</b>	Optimal dilutions for each application to be determined by the researcher.
<b>SPECIFICITY:</b>	BLAST analysis of the peptide immunogen showed no homology with other human proteins.
<b>IMMUNOGEN:</b>	CHRM3 antibody was raised against a peptide located in the 3rd cytoplasmic domain of CHRM3 (Human).
<b>HOST SPECIES:</b>	Rabbit

### Properties

<b>PURIFICATION:</b>	Immunoaffinity Chromatography
<b>PHYSICAL STATE:</b>	Liquid
<b>BUFFER:</b>	PBS, 0.1% sodium azide.
<b>STORAGE CONDITIONS:</b>	CHRM3 antibody should be stored long term (months) at -80 °C and short term (days) at 4 °C. As with all antibodies avoid freeze/thaw cycles.
<b>CLONALITY:</b>	Polyclonal
<b>CONJUGATE:</b>	Unconjugated

### Additional Info

<b>ALTERNATE NAMES:</b>	CHRM3, M3, Muscarinic receptor M3, Muscarinic M3 receptor, EGBRS, HM3, M3 muscarinic receptor
<b>ACCESSION NO.:</b>	P20309
<b>PROTEIN GI NO.:</b>	113125
<b>OFFICIAL SYMBOL:</b>	CHRM3
<b>GENE ID:</b>	1131

### Background

**BACKGROUND:**

Muscarinic acetylcholine receptor 3 is an Acetylcholine Receptor that controls smooth muscle contraction by mediating phosphoinositide hydrolysis and  $\text{Ca}^{2+}$  mobilization. Activation of this receptor causes secretion in glandular tissues. Mouse studies suggest that the M3 receptor may play a role in appetite stimulation and food intake.

---

**FOR RESEARCH USE ONLY**

December 13, 2016