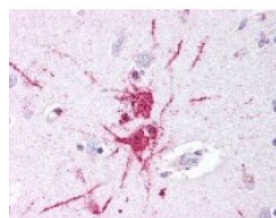




GPR52 Antibody

CATALOG NUMBER: 48-263



Immunohistochemistry staining of GPR52
in putamen, neurons and glia tissue using
GPR52 Antibody.

Specifications

SPECIES REACTIVITY:	Gibbon, Gorilla, Human
TESTED APPLICATIONS:	ELISA, IHC
APPLICATIONS:	GPR52 antibody can be used in immunohistochemistry starting at 15 - 30 ug/mL.
USER NOTE:	Optimal dilutions for each application to be determined by the researcher.
SPECIFICITY:	BLAST analysis of the peptide immunogen showed no homology with other human proteins.
IMMUOGEN:	GPR52 antibody was raised against a peptide located in the C-Terminal cytoplasmic domain of GPR52 (Human).
HOST SPECIES:	Rabbit

Properties

PURIFICATION:	Immunoaffinity Chromatography
PHYSICAL STATE:	Liquid
BUFFER:	PBS, 0.1% sodium azide.
STORAGE CONDITIONS:	GPR52 antibody should be stored long term (months) at -80 °C and short term (days) at 4 °C. As with all antibodies avoid freeze/thaw cycles.
CLONALITY:	Polyclonal
CONJUGATE:	Unconjugated

Additional Info

ALTERNATE NAMES:	GPR52, Axor10, G protein-coupled receptor 52
ACCESSION NO.:	Q9Y2T5
PROTEIN GI NO.:	76803659
OFFICIAL SYMBOL:	GPR52
GENE ID:	9293

Background

BACKGROUND:	GPR52 is an Orphan-A GPCR with an unknown ligand. It has been identified from the high-throughput genome
--------------------	--

(HTG) database and subsequently cloned. It is localized to human chromosome 1.

FOR RESEARCH USE ONLY

December 13, 2016