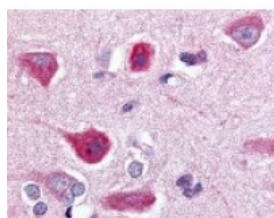




GPR77 Antibody

CATALOG NUMBER: 48-256



Immunohistochemistry staining of GPR77
in brain cortex tissue using GPR77
Antibody.

Specifications

SPECIES REACTIVITY:	Human
TESTED APPLICATIONS:	ELISA, IHC
APPLICATIONS:	GPR77 antibody can be used in immunohistochemistry starting at 10 ug/mL.
USER NOTE:	Optimal dilutions for each application to be determined by the researcher.
SPECIFICITY:	BLAST analysis of the peptide immunogen showed no homology with other human proteins.
IMMUNOGEN:	GPR77 antibody was raised against a peptide located in the C-Terminal cytoplasmic domain of GPR77 (Human).
HOST SPECIES:	Rabbit

Properties

PURIFICATION:	Immunoaffinity Chromatography
PHYSICAL STATE:	Liquid
BUFFER:	PBS, 0.1% sodium azide.
STORAGE CONDITIONS:	GPR77 antibody should be stored long term (months) at -80 °C and short term (days) at 4 °C. As with all antibodies avoid freeze/thaw cycles.
CLONALITY:	Polyclonal
CONJUGATE:	Unconjugated

Additional Info

ALTERNATE NAMES:	GPR77, G-protein coupled receptor 77, GPF77, C5L2, G protein-coupled receptor 77
ACCESSION NO.:	Q9P296
PROTEIN GI NO.:	20137533
OFFICIAL SYMBOL:	GPR77
GENE ID:	27202

Background

BACKGROUND: C5L2 is an Anaphylatoxin Receptor. Binding to anaphylatoxins can result in increased triglyceride synthesis,

although its precise role in cellular responses has not been determined.

FOR RESEARCH USE ONLY

December 13, 2016