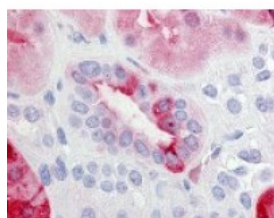




PTGER2 Antibody

CATALOG NUMBER: 48-252



Immunohistochemistry staining of
PTGER2 in kidney tissue using PTGER2
Antibody.

Specifications

SPECIES REACTIVITY:	Gibbon, Gorilla, Human, Monkey
TESTED APPLICATIONS:	ELISA, IHC
APPLICATIONS:	PTGER2 antibody can be used in immunohistochemistry starting at 20 ug/mL.
USER NOTE:	Optimal dilutions for each application to be determined by the researcher.
SPECIFICITY:	BLAST analysis of the peptide immunogen showed no homology with other human proteins.
IMMUNOGEN:	PTGER2 antibody was raised against a peptide located in the C-Terminal cytoplasmic domain of PTGER2 (Human).
HOST SPECIES:	Rabbit

Properties

PURIFICATION:	Immunoaffinity Chromatography
PHYSICAL STATE:	Liquid
BUFFER:	PBS, 0.1% sodium azide.
STORAGE CONDITIONS:	PTGER2 antibody should be stored long term (months) at -80 °C and short term (days) at 4 °C. As with all antibodies avoid freeze/thaw cycles.
CLONALITY:	Polyclonal
CONJUGATE:	Unconjugated

Additional Info

ALTERNATE NAMES:	PTGER2, EP2 prostaglandin e2 receptor, EP2 prostaglandin receptor, EP2, Pge2-r ep2, PGE2 receptor EP2 subtype, Prostaglandin E receptor 2, Prostanoid EP2 receptor, EP2 receptor, PGE receptor EP2 subtype
ACCESSION NO.:	P43116
PROTEIN GI NO.:	38258920
OFFICIAL SYMBOL:	PTGER2
GENE ID:	5732

Background

BACKGROUND: Prostaglandin E Receptor EP2 is a member of the Prostanoid Receptor subfamily. Along with several other receptor subtypes (EP1, EP3, and EP4), it mediates the diverse biological effects of Prostaglandin E2 (PGE2). PGE2 has been implicated in numerous processes, including immune response modulation, male erectile function, induction of labor, cervical cancer, control of blood pressure, asthma, and more recently, Alzheimer's Disease.

FOR RESEARCH USE ONLY

December 13, 2016