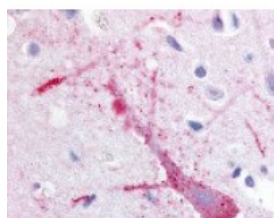




GPRC5B Antibody

CATALOG NUMBER: 48-246



Immunohistochemistry staining of
GPRC5B in brain cortex tissue using
GPRC5B Antibody.

Specifications

SPECIES REACTIVITY:	Bovine, Dog, Gorilla, Horse, Human, Monkey, Orangutan, Pig
TESTED APPLICATIONS:	ELISA, IHC
APPLICATIONS:	GPRC5B antibody can be used in immunohistochemistry starting at 10 ug/mL.
USER NOTE:	Optimal dilutions for each application to be determined by the researcher.
SPECIFICITY:	BLAST analysis of the peptide immunogen showed no homology with other human proteins.
IMMUNOGEN:	GPRC5B antibody was raised against a peptide located in the C-Terminal cytoplasmic domain of GPRC5B (Human).
HOST SPECIES:	Rabbit

Properties

PURIFICATION:	Immunoaffinity Chromatography
PHYSICAL STATE:	Liquid
BUFFER:	PBS, 0.1% sodium azide.
STORAGE CONDITIONS:	GPRC5B antibody should be stored long term (months) at -80 °C and short term (days) at 4 °C. As with all antibodies avoid freeze/thaw cycles.
CLONALITY:	Polyclonal
CONJUGATE:	Unconjugated

Additional Info

ALTERNATE NAMES:	GPRC5B, A-69G12.1, RAIG2, RAIG-2
ACCESSION NO.:	Q9NZH0
PROTEIN GI NO.:	46396016
OFFICIAL SYMBOL:	GPRC5B
GENE ID:	51704

Background

BACKGROUND:

GPRC5B is an Orphan-C GPCR induced by retinoids. GPRC5B shows some homologies to the metabotropic glutamate receptor-like family of GPCRs; however, the GPRC5B protein has a short N-terminal domain compared to other family C members.

FOR RESEARCH USE ONLY

December 13, 2016