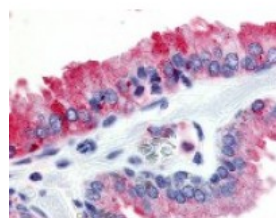




GPR174 Antibody

CATALOG NUMBER: 48-242



Immunohistochemistry staining of
GPR174 in prostate tissue using GPR174
Antibody.

Specifications

SPECIES REACTIVITY:	Gibbon, Gorilla, Human, Monkey
TESTED APPLICATIONS:	ELISA, IHC
APPLICATIONS:	GPR174 antibody can be used in ELISA, and immunohistochemistry starting at 10 ug/mL.
USER NOTE:	Optimal dilutions for each application to be determined by the researcher.
SPECIFICITY:	BLAST analysis of the peptide immunogen showed no homology with other human proteins.
IMMUNOGEN:	GPR174 antibody was raised against a peptide located in the 3rd cytoplasmic domain of GPR174 (Human).
HOST SPECIES:	Rabbit

Properties

PURIFICATION:	Immunoaffinity Chromatography
PHYSICAL STATE:	Liquid
BUFFER:	PBS, 0.1% sodium azide.
STORAGE CONDITIONS:	GPR174 antibody should be stored long term (months) at -80 °C and short term (days) at 4 °C. As with all antibodies avoid freeze/thaw cycles.
CLONALITY:	Polyclonal
CONJUGATE:	Unconjugated

Additional Info

ALTERNATE NAMES:	GPR174, FKSG79, Jeg18, Purinergic receptor fksg79, G protein-coupled receptor 174
ACCESSION NO.:	Q9BXC1
PROTEIN GI NO.:	21263618
OFFICIAL SYMBOL:	GPR174
GENE ID:	84636

Background

BACKGROUND:	GPR174/JEG18 is an Orphan-A GPCR with an unknown ligand.
--------------------	--

