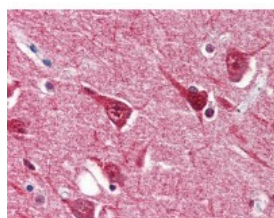




## 14-3-3 Epsilon Antibody [5A5]

CATALOG NUMBER: 48-068



Human brain cortex tissue stained with 14-3-3 Epsilon Antibody at 5 ug/mL followed by biotinylated anti-mouse IgG secondary antibody, alkaline phosphatase-streptavidin and chromogen.

### Specifications

<b>SPECIES REACTIVITY:</b>	Human, Mouse
<b>TESTED APPLICATIONS:</b>	ELISA, IHC, WB
<b>APPLICATIONS:</b>	14-3-3 Epsilon antibody can be used in Western Blot starting at 2.5 - 5 ug/mL, and immunohistochemistry starting at 10 ug/mL.
<b>USER NOTE:</b>	Optimal dilutions for each application to be determined by the researcher.
<b>IMMUNOGEN:</b>	Recombinant human 14-3-3 epsilon (1-255aa) purified from E. coli.
<b>HOST SPECIES:</b>	Mouse

### Properties

<b>PURIFICATION:</b>	Protein G Column
<b>PHYSICAL STATE:</b>	Liquid
<b>BUFFER:</b>	PBS, pH 7.4, 0.1% sodium azide
<b>STORAGE CONDITIONS:</b>	14-3-3 Epsilon antibody should be stored long term (months) at -20 °C and short term (weeks) at 4 °C. As with all antibodies avoid freeze/thaw cycles.
<b>CLONALITY:</b>	Monoclonal
<b>ISOTYPE:</b>	IgG2a,k
<b>CONJUGATE:</b>	Unconjugated

### Additional Info

<b>ALTERNATE NAMES:</b>	YWHAE, 14-3-3E, 14-3-3 epsilon, 14-3-3 protein epsilon, MDCR, MDS, KCIP-1
<b>ACCESSION NO.:</b>	P62258
<b>PROTEIN GI NO.:</b>	51702210
<b>OFFICIAL SYMBOL:</b>	YWHAE
<b>GENE ID:</b>	7531

