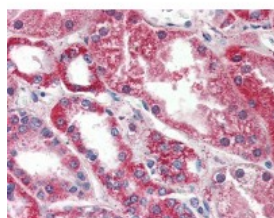




PSPH Antibody [3G12]

CATALOG NUMBER: 48-055



Human kidney tissue stained with PSPH
Antibody at 10 ug/mL followed by
biotinylated anti-mouse IgG secondary
antibody, alkaline phosphatase-streptavidin
and chromogen.

Specifications

SPECIES REACTIVITY:	Human, Mouse
TESTED APPLICATIONS:	ELISA, IHC, WB
APPLICATIONS:	PSPH antibody can be used in ELISA starting at 1:000 - 1:1000, and immunohistochemistry starting at 20 - 40 ug/mL.
USER NOTE:	Optimal dilutions for each application to be determined by the researcher.
IMMUNOGEN:	Recombinant human PSP (1-225aa) purified from E. coli.
HOST SPECIES:	Mouse

Properties

PURIFICATION:	Protein G Column
PHYSICAL STATE:	Liquid
BUFFER:	PBS, pH 7.4, 0.1% sodium azide
STORAGE CONDITIONS:	PSPH antibody should be stored long term (months) at -20 °C and short term (weeks) at 4 °C. As with all antibodies avoid freeze/thaw cycles.
CLONALITY:	Monoclonal
ISOTYPE:	IgG1,k
CONJUGATE:	Unconjugated

Additional Info

ALTERNATE NAMES:	PSPH, L-3-phosphoserine phosphatase, Phosphoserine phosphatase, PSPase, PSP, PSPHD
ACCESSION NO.:	P78330
PROTEIN GI NO.:	62906870
OFFICIAL SYMBOL:	PSPH
GENE ID:	5723

