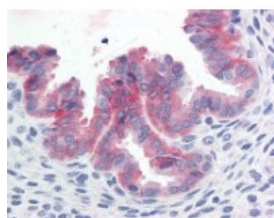




c-Met Antibody, Monoclonal

CATALOG NUMBER: 48-016



Human uterus tissue stained with c-Met Antibody at 10 ug/mL followed by biotinylated anti-mouse IgG secondary antibody, alkaline phosphatase-streptavidin and chromogen.

Specifications

SPECIES REACTIVITY:	Human
TESTED APPLICATIONS:	IHC
APPLICATIONS:	c-Met antibody can be used in ELISA, Western Blot, and immunohistochemistry starting at 5 ug/mL.
USER NOTE:	Optimal dilutions for each application to be determined by the researcher.
IMMUNOGEN:	Synthetic peptide derived from cytoplasmic domain of human c-Met protein
HOST SPECIES:	Mouse

Properties

PURIFICATION:	Purified
PHYSICAL STATE:	Liquid
BUFFER:	PBS, pH 7.4, 1% BSA, 0.1% sodium azide.
STORAGE CONDITIONS:	c-Met antibody should be stored long term (months) at -20 °C and short term (weeks) at 4 °C. As with all antibodies avoid freeze/thaw cycles.
CLONALITY:	Monoclonal
ISOTYPE:	IgG2a
CONJUGATE:	Unconjugated

Additional Info

ALTERNATE NAMES:	MET, AUTS9, C-Met, HGF/SF receptor, HGFR, Met kinase, Proto-oncogene c-Met, Scatter factor receptor, SF receptor, HGF receptor, RCCP2, Tyrosine-protein kinase Met
ACCESSION NO.:	P08581
PROTEIN GI NO.:	251757497
OFFICIAL SYMBOL:	MET
GENE ID:	4233

