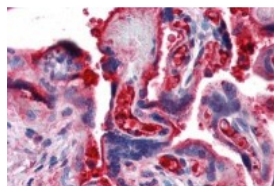




C4B Antibody

CATALOG NUMBER: 48-001



Human placenta tissue stained with C4B
Antibody at 20 ug/mL followed by
biotinylated secondary antibody, alkaline
phosphatase-streptavidin and chromogen.

Specifications

SPECIES REACTIVITY:	Human
TESTED APPLICATIONS:	ELISA, FACS, IHC, WB
APPLICATIONS:	C4B antibody can be used in immunohistochemistry starting at 20 ug/mL.
USER NOTE:	Optimal dilutions for each application to be determined by the researcher.
SPECIFICITY:	Anti-Human Complement Component C4b polyclonal antibody reacts with human C4b
IMMUNOGEN:	Purified human complement C4b
HOST SPECIES:	Chicken

Properties

PURIFICATION:	Purified
PHYSICAL STATE:	Liquid
BUFFER:	PBS, 0.02% sodium azide.
STORAGE CONDITIONS:	Store C4B antibody at 4 °C for short term applications. For long term storage, aliquot and -20 °C.
CLONALITY:	Polyclonal
ISOTYPE:	IgY
CONJUGATE:	Unconjugated

Additional Info

ALTERNATE NAMES:	C4B, C4B12, C4BD, C4B1, C4B3, Complement C4B, CH, Chido form of C4, CPAMD3, Complement C4-B, CO4, Basic complement C4, C4B2, C4B5, C4F, Complement C4B1a, Complement component 4B
ACCESSION NO.:	P0C0L4
PROTEIN GI NO.:	476007827
OFFICIAL SYMBOL:	C4B
GENE ID:	721

FOR RESEARCH USE ONLY

December 13, 2016