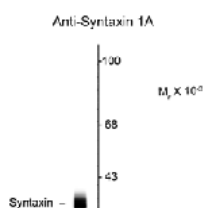




Syntaxin Antibody [SP8]

CATALOG NUMBER: 50-144



Western blot of rat cortex lysate showing specific immunolabeling of the ~36 kD syntaxin 1A protein.

Western blot of rat cortex lysate showing specific immunolabeling of the ~36 kD syntaxin 1A protein.

Specifications

SPECIES REACTIVITY:	Hamster, Human, Porcine, Rat
TESTED APPLICATIONS:	IHC, WB
USER NOTE:	Optimal dilutions for each application to be determined by the researcher.
PREDICTED MOLECULAR WEIGHT:	36
IMMUNOGEN:	Synaptic immunoprecipitate (crude) from human brain.
HOST SPECIES:	Mouse

Properties

PURIFICATION:	Protein G purified
PHYSICAL STATE:	Liquid
BUFFER:	100 uL in 10 mM HEPES (pH 7.5), 150 mM NaCl, 100 ug per mL BSA and 50% glycerol.
CLONALITY:	Monoclonal
ISOTYPE:	IgG1
CONJUGATE:	Unconjugated

Additional Info

ALTERNATE NAMES:	STX1, HPC-1, P35-1, SYN1A, STX1, Neuron-specific antigen HPC-1,
ACCESSION NO.:	Q16623
PROTEIN GI NO.:	2501084
OFFICIAL SYMBOL:	STX1A
GENE ID:	6804

Background

FOR RESEARCH USE ONLY

