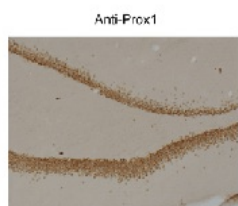




Prox1 Antibody [5G10]

CATALOG NUMBER: 50-140



Immunohistochemical staining of rat dentate gyrus showing specific immunolabeling of the Prox-1 protein. Photo courtesy of Justin Kievits and Theresa Milner, Weill Cornell Medical College.

Immunohistochemical staining of rat dentate gyrus showing specific immunolabeling of the Prox-1 protein. Photo courtesy of Justin Kievits and Theresa Milner, Weill Cornell Medical College.

Specifications

| | |
|-----------------------------|--|
| SPECIES REACTIVITY: | Chicken, Human, Mouse, Rat |
| TESTED APPLICATIONS: | IHC |
| USER NOTE: | Optimal dilutions for each application to be determined by the researcher. |
| IMMUNOGEN: | Recombinant human Prox1 protein. |
| HOST SPECIES: | Mouse |

Properties

| | |
|------------------------|--|
| PURIFICATION: | Protein G purified |
| PHYSICAL STATE: | Liquid |
| BUFFER: | 100 uL in 10 mM HEPES (pH 7.5), 150 mM NaCl, 100 ug per mL BSA and 50% glycerol. |
| CLONALITY: | Monoclonal |
| ISOTYPE: | IgG1 |
| CONJUGATE: | Unconjugated |

Additional Info

| | |
|-------------------------|--|
| ALTERNATE NAMES: | Homeobox prospero-like protein PROX1, PROX-1 |
| ACCESSION NO.: | Q92786 |
| PROTEIN GI NO.: | 85702224 |
| OFFICIAL SYMBOL: | PROX1 |
| GENE ID: | 5629 |

Background

FOR RESEARCH USE ONLY

