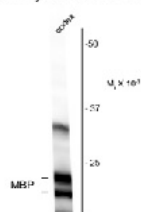




Myelin Basic Protein (MBP) Antibody

CATALOG NUMBER: 50-123

Anti-Myelin Basic Protein



Western blot of rat cortex homogenate showing specific immunolabeling of the ~18 & 22k MBP protein.

Western blot of rat cortex homogenate showing specific immunolabeling of the ~18 & 22k MBP protein.

Specifications

SPECIES REACTIVITY:	Bovine, Human, Mouse, Rat
TESTED APPLICATIONS:	IF, WB
USER NOTE:	Optimal dilutions for each application to be determined by the researcher.
PREDICTED MOLECULAR WEIGHT:	18/22
IMMUNOGEN:	Three peptide sequences conserved in higher vertebrate MBP proteins.
HOST SPECIES:	Chicken

Properties

PURIFICATION:	Total IgY fraction
PHYSICAL STATE:	Liquid
CLONALITY:	Polyclonal
CONJUGATE:	Unconjugated

Additional Info

ALTERNATE NAMES:	mld, shi, Hmbpr, C76307, R75289, golli-mbp, Shi, Myelin A1 protein, MBP
ACCESSION NO.:	P04370
PROTEIN GI NO.:	17378829
OFFICIAL SYMBOL:	Mbp
GENE ID:	17196

Background

FOR RESEARCH USE ONLY