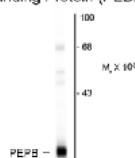




PEBP (phosphatidylethanolamine binding protein) Antibody

CATALOG NUMBER: 50-137

Anti-Phosphatidylethanolamine
Binding Protein (PEBP)



Western blot of rat brain lysate showing the specific
immunolabeling of the ~22k PEBP protein.

Western blot of rat brain lysate showing the
specific immunolabeling of the ~22k PEBP
protein.

Specifications

SPECIES REACTIVITY:	Rat
TESTED APPLICATIONS:	WB
USER NOTE:	Optimal dilutions for each application to be determined by the researcher.
PREDICTED MOLECULAR WEIGHT:	22
IMMUNOGEN:	Native PEBP protein purified from rat
HOST SPECIES:	Rabbit

Properties

PURIFICATION:	Neat Serum
PHYSICAL STATE:	Liquid
CLONALITY:	Polyclonal
CONJUGATE:	Unconjugated

Additional Info

ALTERNATE NAMES:	Pbp, HCNP, Rkip, Pbp, Pebp, 23 kDa morphine-binding protein,
ACCESSION NO.:	P31044
PROTEIN GI NO.:	400734
OFFICIAL SYMBOL:	Pebp1
GENE ID:	29542

Background

FOR RESEARCH USE ONLY