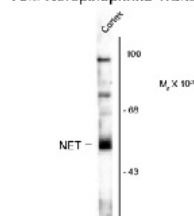




Norepinephrine Transporter Antibody [NET-05]

CATALOG NUMBER: 50-127

Anti-Norepinephrine Transporter



Western blot of rat cortex lysate showing specific immunolabeling of the ~55k NET protein.

Western blot of rat cortex lysate showing specific immunolabeling of the ~55k NET protein.

Specifications

SPECIES REACTIVITY:	Mouse, Rat
TESTED APPLICATIONS:	WB
USER NOTE:	Optimal dilutions for each application to be determined by the researcher.
PREDICTED MOLECULAR WEIGHT:	55
IMMUNOGEN:	Synthetic peptide from N-terminal region of mouse norepinephrine transporter
HOST SPECIES:	Mouse

Properties

PURIFICATION:	Protein G purified
PHYSICAL STATE:	Liquid
BUFFER:	100 uL in 10 mM HEPES (pH 7.5), 150 mM NaCl, 100 ug per mL BSA and 50% glycerol.
CLONALITY:	Monoclonal
ISOTYPE:	IgG2b
CONJUGATE:	Unconjugated

Additional Info

ALTERNATE NAMES:	NET, NE-T, Slc6a5, Norepinephrine transporter, NET
ACCESSION NO.:	O55192
PROTEIN GI NO.:	341942009
OFFICIAL SYMBOL:	Slc6a2
GENE ID:	20538

Background

FOR RESEARCH USE ONLY

