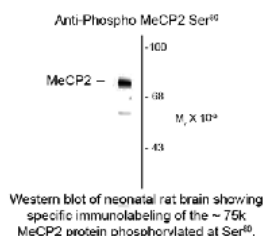




MeCP2 (phospho Ser80) Antibody

CATALOG NUMBER: 50-111



Western blot of neonatal rat brain showing specific immunolabeling of the ~75k MeCP2 protein phosphorylated at Ser80.

Specifications

SPECIES REACTIVITY:	Human, Mouse, Rat
TESTED APPLICATIONS:	IHC, WB
USER NOTE:	Optimal dilutions for each application to be determined by the researcher.
PREDICTED MOLECULAR WEIGHT:	75
IMMUNOGEN:	Phosphopeptide corresponding to amino acid residues surrounding the phospho-Ser80 of MECP2 (Methyl-CpG Binding Protein 2) protein.
HOST SPECIES:	Rabbit

Properties

PURIFICATION:	Serum
PHYSICAL STATE:	Liquid
BUFFER:	100 uL in 10 mM HEPES (pH 7.5), 150 mM NaCl, 100 ug per mL BSA and 50% glycerol.
CLONALITY:	Polyclonal
CONJUGATE:	Unconjugated

Additional Info

ALTERNATE NAMES:	RS, RTS, RTT, PPMX, MRX16, MRX79, MRXSL, AUTSX3, MRXS13, MeCp-2 protein
ACCESSION NO.:	P51608
PROTEIN GI NO.:	1708973
OFFICIAL SYMBOL:	MECP2
GENE ID:	4204

Background

FOR RESEARCH USE ONLY

