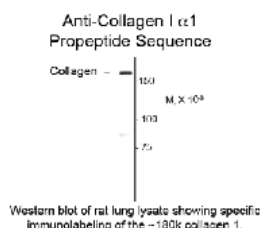




## Collagen 1, alpha 1 propeptide Antibody

CATALOG NUMBER: 50-104



Western blot of rat lung lysate showing specific immunolabeling of the ~180k collagen 1.

### Specifications

<b>SPECIES REACTIVITY:</b>	Human, Mouse, Rat
<b>TESTED APPLICATIONS:</b>	IHC, WB
<b>USER NOTE:</b>	Optimal dilutions for each application to be determined by the researcher.
<b>PREDICTED MOLECULAR WEIGHT:</b>	180
<b>IMMUNOGEN:</b>	Synthetic peptide taken from the C-terminal region of human collagen I $\alpha$ 1 propeptide sequence.
<b>HOST SPECIES:</b>	Rabbit

### Properties

<b>PURIFICATION:</b>	Affinity Purified
<b>PHYSICAL STATE:</b>	Liquid
<b>BUFFER:</b>	100 uL in PBS
<b>CLONALITY:</b>	Polyclonal
<b>CONJUGATE:</b>	Unconjugated

### Additional Info

<b>ALTERNATE NAMES:</b>	OI4, Alpha-1 type I collagen,
<b>ACCESSION NO.:</b>	P02452
<b>PROTEIN GI NO.:</b>	296439504
<b>OFFICIAL SYMBOL:</b>	COL1A1
<b>GENE ID:</b>	1277

### Background

FOR RESEARCH USE ONLY