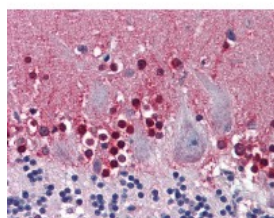




## CBS Antibody [6A9]

CATALOG NUMBER: 51-895



Immunohistochemistry of human cerebellum tissue stained using CBS Monoclonal Antibody.

### Specifications

<b>SPECIES REACTIVITY:</b>	Human
<b>TESTED APPLICATIONS:</b>	ELISA, IHC, WB
<b>APPLICATIONS:</b>	CBS antibody can be used in Western Blot starting at 2 ug/mL, and immunohistochemistry starting at 1:50.
<b>USER NOTE:</b>	Optimal dilutions for each application to be determined by the researcher.
<b>IMMUNOGEN:</b>	CBS (NP_000062, 1 a.a. ~ 101 a.a) partial recombinant protein with GST tag. MW of the GST tag alone is 26 KDa.
<b>HOST SPECIES:</b>	Mouse

### Properties

<b>PURIFICATION:</b>	Protein A Column
<b>PHYSICAL STATE:</b>	Liquid
<b>BUFFER:</b>	PBS, pH 7.2
<b>STORAGE CONDITIONS:</b>	Aliquot and store CBS antibody at -20 °C or -80 °C. As with all antibodies avoid freeze/thaw cycles.
<b>CLONALITY:</b>	Monoclonal
<b>ISOTYPE:</b>	IgG1,k
<b>CONJUGATE:</b>	Unconjugated

### Additional Info

<b>ALTERNATE NAMES:</b>	CBS, Beta-thionase, Cystathionine beta-synthase, HIP4, Methylcysteine synthase, Serine sulphydrase, Cystathionine-beta-synthase
<b>ACCESSION NO.:</b>	P35520
<b>PROTEIN GI NO.:</b>	543959
<b>OFFICIAL SYMBOL:</b>	CBS
<b>GENE ID:</b>	875

### Background

