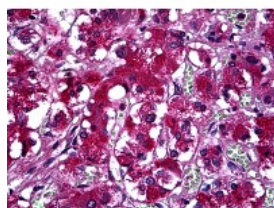




Synaptotagmin Antibody [1A6]

CATALOG NUMBER: 51-812



Immunohistochemistry of human adrenal tissue stained using Synaptotagmin Monoclonal Antibody.

Specifications

SPECIES REACTIVITY:	Human
TESTED APPLICATIONS:	ELISA, IHC, WB
APPLICATIONS:	Synaptotagmin antibody can be used in Western Blot starting at 1:250 - 1:500, and immunohistochemistry starting at 1:50.
USER NOTE:	Optimal dilutions for each application to be determined by the researcher.
IMMUNOGEN:	Recombinant protein
HOST SPECIES:	Mouse

Properties

PURIFICATION:	Protein A Column
PHYSICAL STATE:	Liquid
BUFFER:	PBS, pH 7.2
STORAGE CONDITIONS:	Synaptotagmin antibody can be stored short term 4 °C. For long term storage aliquot and store at -20 °C. As with all antibodies avoid freeze/thaw cycles.
CLONALITY:	Monoclonal
ISOTYPE:	IgG2a,k
CONJUGATE:	Unconjugated

Additional Info

ALTERNATE NAMES:	SYT1, SYT, SVP65, Synaptotagmin, Synaptotagmin 1, Sytl, Synaptotagmin I, Synaptotagmin-1
ACCESSION NO.:	P21579
PROTEIN GI NO.:	135086
OFFICIAL SYMBOL:	SYT1
GENE ID:	6857

Background

