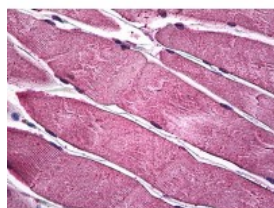




PIM1 Antibody [6A2]

CATALOG NUMBER: 51-782



Immunohistochemistry of human skeletal muscle tissue stained using PIM1 Monoclonal Antibody.

Specifications

SPECIES REACTIVITY:	Human
TESTED APPLICATIONS:	ELISA, IF, IHC
APPLICATIONS:	PIM1 antibody can be used in ELISA, Western Blot starting at 2 - 4 ug/mL, immunohistochemistry starting at 5 ug/mL, and flow cytometry starting at 1 ug/mL.
USER NOTE:	Optimal dilutions for each application to be determined by the researcher.
IMMUNOGEN:	Recombinant protein
HOST SPECIES:	Mouse

Properties

PURIFICATION:	Protein A Column
PHYSICAL STATE:	Liquid
BUFFER:	PBS, pH 7.2
STORAGE CONDITIONS:	PIM1 antibody can be stored short term 4 °C. For long term storage aliquot and store at -20 °C. As with all antibodies avoid freeze/thaw cycles.
CLONALITY:	Monoclonal
ISOTYPE:	IgG1,k
CONJUGATE:	Unconjugated

Additional Info

ALTERNATE NAMES:	PIM1, Pim-1 kinase 44 kDa isoform, Proviral integration site 1, Oncogene PIM1, PIM, Pim-1, Pim-1 oncogene
ACCESSION NO.:	P11309
PROTEIN GI NO.:	83305339
OFFICIAL SYMBOL:	PIM1
GENE ID:	5292

Background

