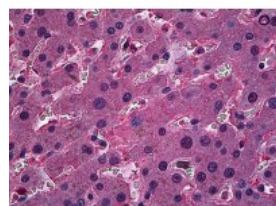




ORM1 Antibody [2F9-1F10]

CATALOG NUMBER: 51-778



Immunohistochemistry of human liver tissue stained using ORM1 Monoclonal Antibody.

Specifications

SPECIES REACTIVITY:	Human
TESTED APPLICATIONS:	ELISA, IHC, IP, WB
APPLICATIONS:	ORM1 antibody can be used in ELISA, Western Blot starting at 2 - 4 ug/mL, immunohistochemistry starting at 10 ug/mL, immunoprecipitation, and flow cytometry starting at 1 ug/mL.
USER NOTE:	Optimal dilutions for each application to be determined by the researcher.
IMMUNOGEN:	Recombinant protein
HOST SPECIES:	Mouse

Properties

PURIFICATION:	Protein A Column
PHYSICAL STATE:	Liquid
BUFFER:	PBS, pH 7.2
STORAGE CONDITIONS:	ORM1 antibody can be stored short term 4 °C. For long term storage aliquot and store at -20 °C. As with all antibodies avoid freeze/thaw cycles.
CLONALITY:	Monoclonal
ISOTYPE:	IgG1,k
CONJUGATE:	Unconjugated

Additional Info

ALTERNATE NAMES:	ORM1, AGP-A, Alpha-1-acid glycoprotein 1, AGP 1, AGP1, Alpha-1-acid glycoprotein 2, OMD 1, Orosomucoid, Orosomucoid-1, ORM, Orosomucoid 1
ACCESSION NO.:	P02763
PROTEIN GI NO.:	112877
OFFICIAL SYMBOL:	ORM1
GENE ID:	5004

FOR RESEARCH USE ONLY

December 13, 2016