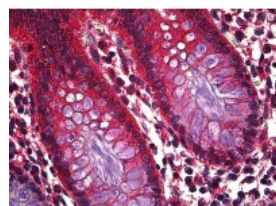




Ghrelin Antibody [4B8]

CATALOG NUMBER: 51-760



Immunohistochemistry of human colon epithelium tissue stained using Ghrelin Monoclonal Antibody.

Specifications

SPECIES REACTIVITY:	Human
TESTED APPLICATIONS:	ELISA, IHC, WB
APPLICATIONS:	Ghrelin antibody can be used in ELISA starting at 1 ug/mL, Western Blot starting at 1 ug/mL, and immunohistochemistry starting at 20 ug/mL.
USER NOTE:	Optimal dilutions for each application to be determined by the researcher.
IMMUNOGEN:	Recombinant protein
HOST SPECIES:	Mouse

Properties

PURIFICATION:	Protein A Column
PHYSICAL STATE:	Liquid
BUFFER:	PBS, pH 7.2
STORAGE CONDITIONS:	Ghrelin antibody can be stored short term 4 °C. For long term storage aliquot and store at -20 °C. As with all antibodies avoid freeze/thaw cycles.
CLONALITY:	Monoclonal
ISOTYPE:	IgG2a,k
CONJUGATE:	Unconjugated

Additional Info

ALTERNATE NAMES:	GHRL, Ghrelin, Growth hormone secretagogue, Motilin-related peptide, Obestatin, Appetite-regulating hormone, MTLRP, Protein M46
ACCESSION NO.:	Q9UBU3
PROTEIN GI NO.:	17865471
OFFICIAL SYMBOL:	GHRL
GENE ID:	51738

