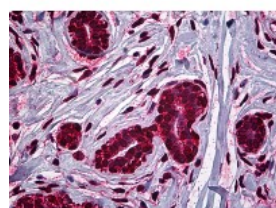




## MDM2 Antibody [1A7]

CATALOG NUMBER: 51-754



Immunohistochemistry of human breast tissue stained using MDM2 Monoclonal Antibody.

### Specifications

<b>SPECIES REACTIVITY:</b>	Human
<b>TESTED APPLICATIONS:</b>	ELISA, IHC, WB
<b>APPLICATIONS:</b>	MDM2 antibody can be used in ELISA starting at 1 ug/mL, Western Blot starting at 1 ug/mL, and immunohistochemistry starting at 10 ug/mL.
<b>USER NOTE:</b>	Optimal dilutions for each application to be determined by the researcher.
<b>IMMUNOGEN:</b>	Recombinant protein
<b>HOST SPECIES:</b>	Mouse

### Properties

<b>PURIFICATION:</b>	Protein A Column
<b>PHYSICAL STATE:</b>	Liquid
<b>BUFFER:</b>	PBS, pH 7.2
<b>CONCENTRATION:</b>	0.43 mg/ml
<b>STORAGE CONDITIONS:</b>	MDM2 antibody can be stored short term 4 °C. For long term storage aliquot and store at -20 °C. As with all antibodies avoid freeze/thaw cycles.
<b>CLONALITY:</b>	Monoclonal
<b>ISOTYPE:</b>	IgG1,k
<b>CONJUGATE:</b>	Unconjugated

### Additional Info

<b>ALTERNATE NAMES:</b>	MDM2, ACTFS, Double minute 2 protein, Hdm2, MDM2 variant FB30, HDMX, Oncoprotein Mdm2, p53-binding protein Mdm2, MDM2 variant FB28
<b>ACCESSION NO.:</b>	Q00987
<b>PROTEIN GI NO.:</b>	266516
<b>OFFICIAL SYMBOL:</b>	MDM2
<b>GENE ID:</b>	4193

