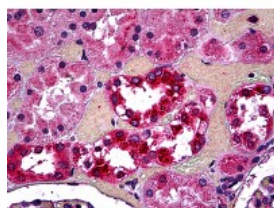




TPP1 Antibody [3B1]

CATALOG NUMBER: 51-687



Immunohistochemistry of human kidney
tubules stained using TPP1 Monoclonal
Antibody.

Specifications

SPECIES REACTIVITY:	Human
TESTED APPLICATIONS:	ELISA, IHC, WB
APPLICATIONS:	TPP1 antibody can be used in ELISA, Western Blot starting at 1:500 - 1:1000, and immunohistochemistry starting at 10 ug/mL.
USER NOTE:	Optimal dilutions for each application to be determined by the researcher.
IMMUNOGEN:	Recombinant protein
HOST SPECIES:	Mouse

Properties

PURIFICATION:	Protein A Column
PHYSICAL STATE:	Liquid
BUFFER:	PBS, pH 7.2
STORAGE CONDITIONS:	TPP1 antibody can be stored short term 4 °C. For long term storage aliquot and store at -20 °C. As with all antibodies avoid freeze/thaw cycles.
CLONALITY:	Monoclonal
ISOTYPE:	IgG1,k
CONJUGATE:	Unconjugated

Additional Info

ALTERNATE NAMES:	TPP1, CLN2, GIG1, LPIC, LINCL, TPP-I, Tripeptidyl aminopeptidase, Tripeptidyl peptidase I, Tripeptidyl-peptidase 1, Tripeptidyl-peptidase I, TPP-1, Growth-inhibiting protein 1
ACCESSION NO.:	O14773
PROTEIN GI NO.:	108936017
OFFICIAL SYMBOL:	TPP1
GENE ID:	1200

FOR RESEARCH USE ONLY

December 13, 2016