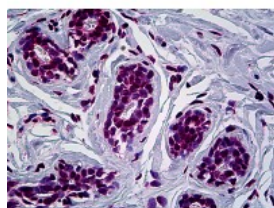




RUNX1 Antibody [4E7]

CATALOG NUMBER: 51-679



Immunohistochemistry of human breast tissue stained using RUNX1 Monoclonal Antibody.

Specifications

SPECIES REACTIVITY:	Human, Mouse
TESTED APPLICATIONS:	ELISA, IF, IHC, WB
APPLICATIONS:	RUNX1 antibody can be used in Western Blot, and immunohistochemistry starting at 5 ug/mL.
USER NOTE:	Optimal dilutions for each application to be determined by the researcher.
IMMUNOGEN:	Recombinant protein
HOST SPECIES:	Mouse

Properties

PURIFICATION:	Protein A Column
PHYSICAL STATE:	Liquid
BUFFER:	PBS, pH 7.2
CONCENTRATION:	0.46 mg/ml
STORAGE CONDITIONS:	RUNX1 antibody should be stored long term (months) at -20 °C and short term (weeks) at 4 °C. As with all antibodies avoid freeze/thaw cycles.
CLONALITY:	Monoclonal
ISOTYPE:	IgG2b,k
CONJUGATE:	Unconjugated

Additional Info

ALTERNATE NAMES:	RUNX1, AMLCR1, Aml1 oncogene, AML1, AML1-EVI-1, CBF-alpha-2, CBFA2, Acute myeloid leukemia 1, EVI-1, PEBP2A2, PEA2-alpha B, AML1-EVI-1 fusion protein, Oncogene AML-1, PEBP2-alpha B, PEBP2aB
ACCESSION NO.:	Q01196
PROTEIN GI NO.:	215274205
OFFICIAL SYMBOL:	RUNX1
GENE ID:	861

