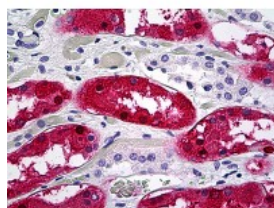




## Aminoacylase-1 Antibody [4F1-B7]

CATALOG NUMBER: 51-671



Immunohistochemistry of human kidney  
tubules stained using Aminoacylase-1  
Monoclonal Antibody.

### Specifications

<b>SPECIES REACTIVITY:</b>	Human
<b>TESTED APPLICATIONS:</b>	ELISA, IF, IHC, IP, WB
<b>APPLICATIONS:</b>	Aminoacylase-1 antibody can be used in Western Blot, immunohistochemistry starting at 5 ug/mL, and immunoprecipitation.
<b>USER NOTE:</b>	Optimal dilutions for each application to be determined by the researcher.
<b>IMMUNOGEN:</b>	Recombinant protein
<b>HOST SPECIES:</b>	Mouse

### Properties

<b>PURIFICATION:</b>	Protein A Column
<b>PHYSICAL STATE:</b>	Liquid
<b>BUFFER:</b>	PBS, pH 7.2
<b>STORAGE CONDITIONS:</b>	Aminoacylase-1 antibody can be stored short term 4 °C. For long term storage aliquot and store at -20 °C. As with all antibodies avoid freeze/thaw cycles.
<b>CLONALITY:</b>	Monoclonal
<b>ISOTYPE:</b>	IgG1,k
<b>CONJUGATE:</b>	Unconjugated

### Additional Info

<b>ALTERNATE NAMES:</b>	ACY1, Aminoacylase-1, ACY-1, ACY1D, Acylase, Acylase I, Aminoacylase 1, Aminoacylase, Aminoacylase I
<b>ACCESSION NO.:</b>	Q03154
<b>PROTEIN GI NO.:</b>	461466
<b>OFFICIAL SYMBOL:</b>	ACY1
<b>GENE ID:</b>	95

### Background

