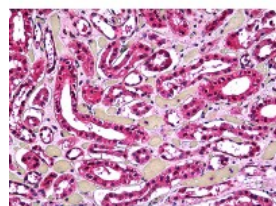




Acid Phosphatase 2 Antibody [M1-4A12]

CATALOG NUMBER: 51-669



Immunohistochemistry of human kidney
tubules stained using Acid Phosphatase 2
Monoclonal Antibody.

Specifications

| | |
|-----------------------------|---|
| SPECIES REACTIVITY: | Human |
| TESTED APPLICATIONS: | ELISA, IF, IHC, WB |
| APPLICATIONS: | Acid Phosphatase 2 antibody can be used in Western Blot, and immunohistochemistry starting at 10 ug/mL. |
| USER NOTE: | Optimal dilutions for each application to be determined by the researcher. |
| IMMUNOGEN: | Recombinant protein |
| HOST SPECIES: | Mouse |

Properties

| | |
|----------------------------|--|
| PURIFICATION: | Protein A Column |
| PHYSICAL STATE: | Liquid |
| BUFFER: | PBS, pH 7.2 |
| STORAGE CONDITIONS: | Acid Phosphatase 2 antibody can be stored short term 4 °C. For long term storage aliquot and store at -20 °C. As with all antibodies avoid freeze/thaw cycles. |
| CLONALITY: | Monoclonal |
| ISOTYPE: | IgG2b,I |
| CONJUGATE: | Unconjugated |

Additional Info

| | |
|-------------------------|--|
| ALTERNATE NAMES: | ACP2, Acid Phosphatase 2, Acid phosphatase 2, lysosomal, LAP, Lysosomal acid phosphatase |
| ACCESSION NO.: | P11117 |
| PROTEIN GI NO.: | 115502439 |
| OFFICIAL SYMBOL: | ACP2 |
| GENE ID: | 53 |

Background

