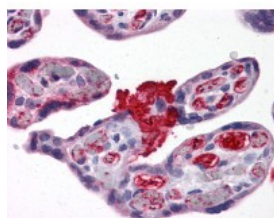




## MSX2 Antibody [1F6]

CATALOG NUMBER: 51-488



Immunohistochemistry of human placenta tissue stained using MSX2 Monoclonal Antibody.

### Specifications

<b>SPECIES REACTIVITY:</b>	Human
<b>TESTED APPLICATIONS:</b>	ELISA, IHC, WB
<b>APPLICATIONS:</b>	MSX2 antibody can be used in ELISA starting at 1:5000 - 1:20000, Western Blot starting at 1:500 - 1:2000, immunohistochemistry starting at 5 ug/mL, and immunofluorescence.
<b>USER NOTE:</b>	Optimal dilutions for each application to be determined by the researcher.
<b>IMMUNOGEN:</b>	MSX2 (NP_002440, 101 a.a. ~ 201 a.a) partial recombinant protein with GST tag. MW of the GST tag alone is 26 KDa.
<b>HOST SPECIES:</b>	Mouse

### Properties

<b>PURIFICATION:</b>	Protein A Column
<b>PHYSICAL STATE:</b>	Liquid
<b>BUFFER:</b>	PBS, pH 7.4. Sourced in Ascites.
<b>CONCENTRATION:</b>	0.5 mg/ml
<b>STORAGE CONDITIONS:</b>	Store MSX2 antibody at -20 °C. Aliquot to avoid freeze/thaw cycles.
<b>CLONALITY:</b>	Monoclonal
<b>ISOTYPE:</b>	IgG2a,k
<b>CONJUGATE:</b>	Unconjugated

### Additional Info

<b>ALTERNATE NAMES:</b>	MSX2, CRS2, HOX8, Homeobox protein Hox-8, Homeobox protein MSX-2, Msh homeo box 2, Parietal foramina 1, PFM1, MSH, Msh homeobox 2, Msh homeobox homolog 2, PFM, FPP
<b>ACCESSION NO.:</b>	P35548
<b>PROTEIN GI NO.:</b>	311033429
<b>OFFICIAL SYMBOL:</b>	MSX2
<b>GENE ID:</b>	4488

