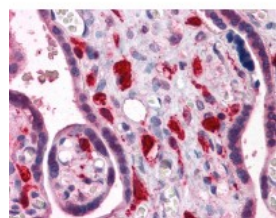




## SMAD6 Antibody [1G2]

CATALOG NUMBER: 51-484



Immunohistochemistry of human placenta tissue stained using SMAD6 Monoclonal Antibody.

### Specifications

<b>SPECIES REACTIVITY:</b>	Human
<b>TESTED APPLICATIONS:</b>	ELISA, IHC, WB
<b>APPLICATIONS:</b>	SMAD6 antibody can be used in ELISA starting at 1:10000 - 1:50000, Western Blot starting at 1:200 - 1:2000, and immunohistochemistry starting at 5 ug/mL.
<b>USER NOTE:</b>	Optimal dilutions for each application to be determined by the researcher.
<b>IMMUNOGEN:</b>	SMAD6 (NP_005576, 285 a.a. ~ 385 a.a) partial recombinant protein with GST tag. MW of the GST tag alone is 26 KDa.
<b>HOST SPECIES:</b>	Mouse

### Properties

<b>PURIFICATION:</b>	Protein A Column
<b>PHYSICAL STATE:</b>	Liquid
<b>BUFFER:</b>	PBS, pH 7.2
<b>STORAGE CONDITIONS:</b>	Store SMAD6 antibody at -20 °C. Aliquot to avoid freeze/thaw cycles.
<b>CLONALITY:</b>	Monoclonal
<b>ISOTYPE:</b>	IgG2a,k
<b>CONJUGATE:</b>	Unconjugated

### Additional Info

<b>ALTERNATE NAMES:</b>	SMAD6, AOVD2, HSMAD6, HsT17432, SMAD 6, MADH7, Mothers against DPP homolog 6, SMAD family member 6, MAD homolog 6, MADH6
<b>ACCESSION NO.:</b>	O43541
<b>PROTEIN GI NO.:</b>	115502451
<b>OFFICIAL SYMBOL:</b>	SMAD6
<b>GENE ID:</b>	4091

FOR RESEARCH USE ONLY

December 13, 2016