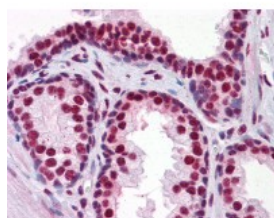




RUNX2 Antibody [3F5]

CATALOG NUMBER: 51-436



Immunohistochemistry of human prostate tissue stained using RUNX2 Monoclonal Antibody.

Specifications

SPECIES REACTIVITY:	Human, Rat
TESTED APPLICATIONS:	ELISA, IF, IHC, WB
APPLICATIONS:	RUNX2 antibody can be used in immunohistochemistry starting at 15 ug/mL.
USER NOTE:	Optimal dilutions for each application to be determined by the researcher.
IMMUNOGEN:	RUNX2 (NP_004339, 251 a.a. ~ 351 a.a) partial recombinant protein with GST tag. MW of the GST tag alone is 26 KDa.
HOST SPECIES:	Mouse

Properties

PURIFICATION:	Protein A Column
PHYSICAL STATE:	Liquid
BUFFER:	PBS, pH 7.2
STORAGE CONDITIONS:	Store RUNX2 antibody at -20 °C. Aliquot to avoid freeze/thaw cycles.
CLONALITY:	Monoclonal
ISOTYPE:	IgG2a,k
CONJUGATE:	Unconjugated

Additional Info

ALTERNATE NAMES:	RUNX2, AML3, CCD, CCD1, OSF2, PEBP2A1, PEBP2A2, PEA2-alpha A, PEBP2-alpha A, OSF-2, PEBP2A, PEBP2aA1, CBF-alpha-1, CBFA1, Oncogene AML-3, PEA2aA, PEBP2aA
ACCESSION NO.:	Q13950
PROTEIN GI NO.:	17368460
OFFICIAL SYMBOL:	RUNX2
GENE ID:	860

Background

