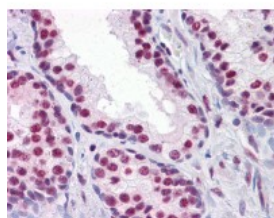




## RUNX2 Antibody [4D5]

CATALOG NUMBER: 51-434



Immunohistochemistry of human prostate tissue stained using RUNX2 Monoclonal Antibody.

### Specifications

<b>SPECIES REACTIVITY:</b>	Human, Rat
<b>TESTED APPLICATIONS:</b>	ELISA, IF, IHC, WB
<b>APPLICATIONS:</b>	RUNX2 antibody can be used in Western Blot starting at 1 - 2 ug/mL, and immunohistochemistry starting at 5 ug/mL.
<b>USER NOTE:</b>	Optimal dilutions for each application to be determined by the researcher.
<b>IMMUNOGEN:</b>	RUNX2 (NP_004339, 251 a.a. ~ 351 a.a) partial recombinant protein with GST tag. MW of the GST tag alone is 26 KDa.
<b>HOST SPECIES:</b>	Mouse

### Properties

<b>PURIFICATION:</b>	Protein A Column
<b>PHYSICAL STATE:</b>	Liquid
<b>BUFFER:</b>	PBS, pH 7.2
<b>STORAGE CONDITIONS:</b>	Store RUNX2 antibody at -20 °C. Aliquot to avoid freeze/thaw cycles.
<b>CLONALITY:</b>	Monoclonal
<b>ISOTYPE:</b>	IgG2a,k
<b>CONJUGATE:</b>	Unconjugated

### Additional Info

<b>ALTERNATE NAMES:</b>	RUNX2, AML3, CCD, CCD1, OSF2, PEBP2A1, PEBP2A2, PEA2-alpha A, PEBP2-alpha A, OSF-2, PEBP2A, PEBP2aA1, CBF-alpha-1, CBFA1, Oncogene AML-3, PEA2aA, PEBP2aA
<b>ACCESSION NO.:</b>	Q13950
<b>PROTEIN GI NO.:</b>	17368460
<b>OFFICIAL SYMBOL:</b>	RUNX2
<b>GENE ID:</b>	860

